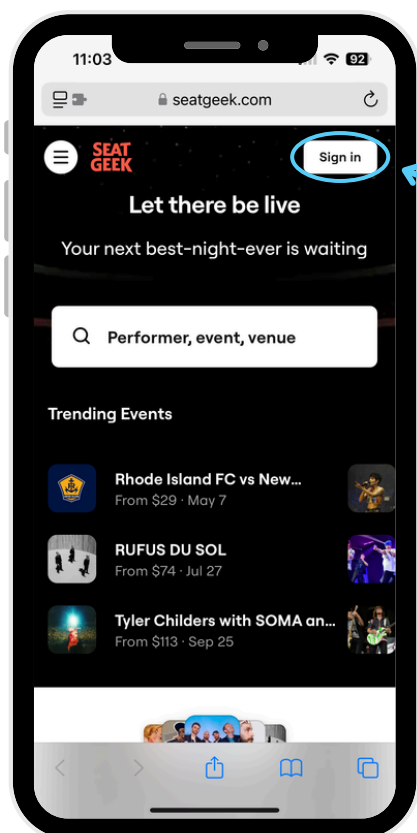


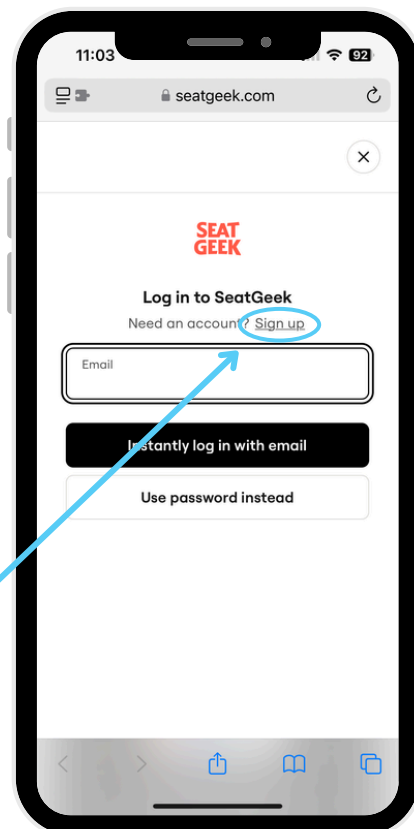
HOW TO CREATE & LINK A SEATGEEK ACCOUNT

TO ACCESS YOUR TICKETS



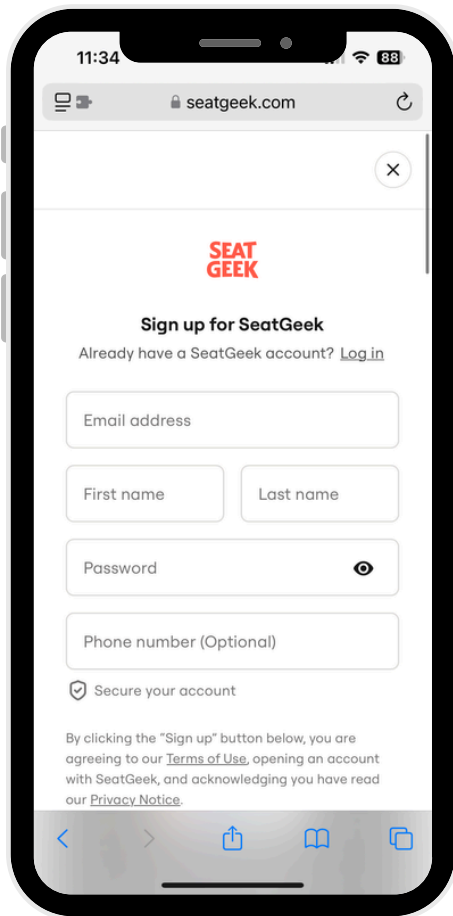
STEP 1

To create an account, visit seatgeek.com and click “Sign in.”



STEP 2

Select “Sign up.”

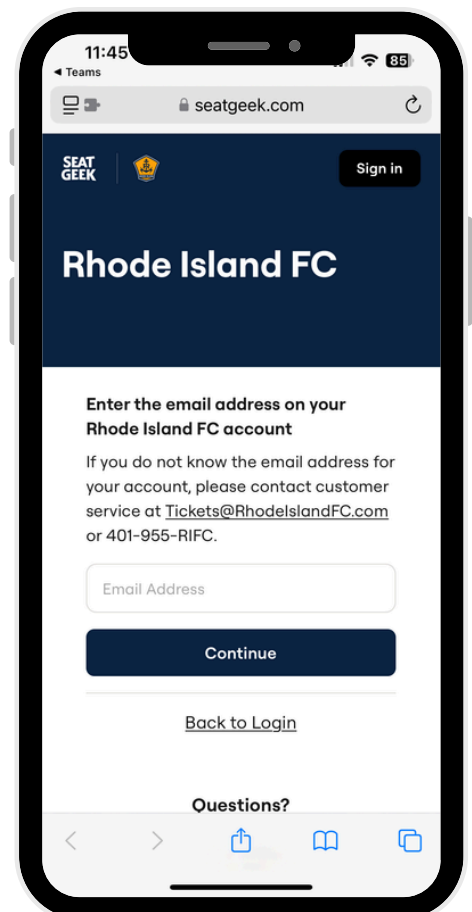


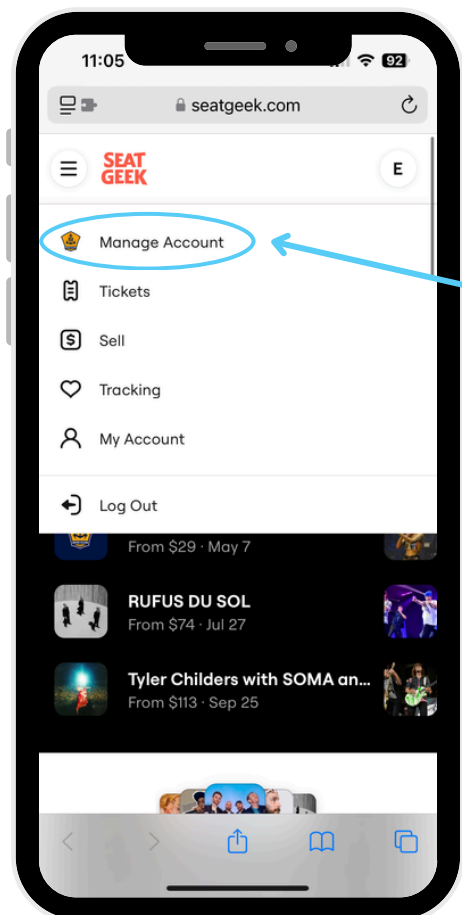
STEP 3

Create an account using the email address used to purchase your tickets.

STEP 4

After creating an account, visit seatgeek.com/rhodeislandfc/verify to link your account to the Rhode Island FC Account Manager. Your tickets will appear in your account once linked to the RIFC Account Manager.





STEP 5

Once your account is linked, you will see “Manage Account” with the Rhode Island FC crest on your SeatGeek profile.

If you are having trouble with your account or tickets, email Tickets@RhodelslandFC.com, call 401-955-RIFC (7432), or speak with Box Office staff at the Box Office near the North Gate.