



COACHES PACKET



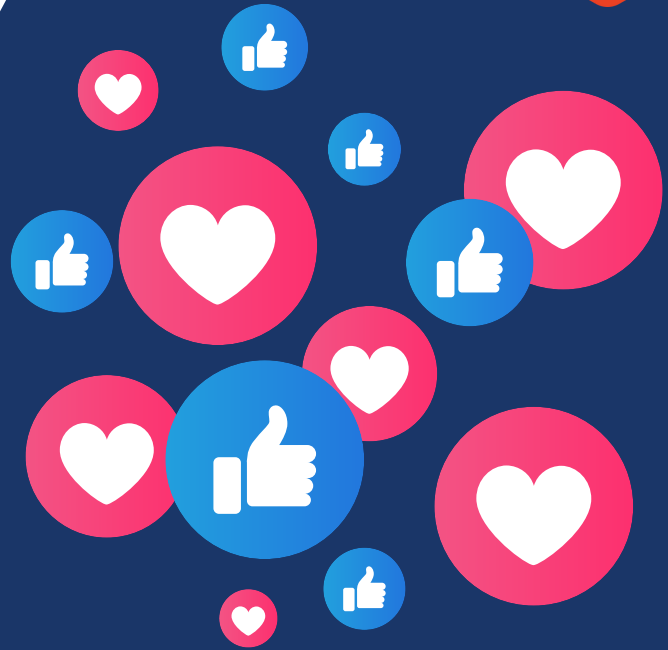
**HIGH SCHOOL FAST PITCH
FALL FESTIVAL
AUGUST 22-24, 2024**

DEVON PARK | OKC, OK



DEVON
PARK
OKC

Follow Us on Social Media



Let's Get Connected for Our Latest News & Updates



INSTAGRAM @DEVONPARKOKC



FACEBOOK @USA SOFTBALL HALL
OF FAME COMPLEX



X (TWITTER) @DEVONPARKOKC



WEBSITE @USASOFTBALL.COM



• 2801 NE 50TH STREET OKC, OK 73111 • (405) 424-5266

Welcome to OKLAHOMA CITY

THE SOFTBALL CAPITAL OF THE WORLD



FORMAT / GAME INFO

EVENT FORMAT

EACH TEAM WILL PLAY 2 GAMES PER DAY UNLESS YOU REQUESTED OTHERWISE WITH THE DIRECTOR.

GAME COST

THE COST FOR THIS EVENT IS \$80 PER GAME PLAYED. ALL INVOICES WILL BE SENT TO THE HEAD COACHES PRIOR TO THE EVENT.

TIME LIMITS

THERE WILL BE NO TIME LIMIT. WE WILL PLAY FULL 7 INNINGS UNLESS THE RUN AHEAD RULE APPLIES.

RULES

ALL GAME RULES WILL BE FOLLOWING OSSAA / NFHS RULES.

SCHEDULE

SCHEDULES WILL BE UPDATED AND MAINTAINED THROUGH TOURNEY MACHINE FOR THIS EVENT. ALL SCORES WILL BE POSTED FOLLOWING EACH GAME. COACHES WILL BE EMAILED AND NOTIFIED IF ANY SCHEDULE CHANGES WILL BE MADE DUE TO TEAMS DROPPING/WEATHER/ETC.

MISTREATMENT OF UMPIRES

UMPIRES ARE HUMAN AND WILL MAKE MISTAKES. ANYONE WHO IS EJECTED FROM A GAME WILL NOT BE ABLE TO COACH THE TEAMS NEXT GAME OF THE TOURNAMENT. MISTREATMENT OF UMPIRES WILL NOT BE TOLERATED.

EVENT SCHEDULE

THURSDAY, AUGUST 22

DP 1	OGE ENERGY STADIUM	DP 4	INTEGRIS FIELD	DP 3	FIELD 3
9:00	HSFP - P1 - Choctaw vs. Lone Grove	9:00	HSFP - P2 - Oktaha JV vs. Mount St. Mary	9:00	HSFP - P3 - Arnett vs. Chouteau
11:00	HSFP - P4 - Walters vs. Carney	11:00	HSFP - P5 - Arnett vs. Hammon	11:00	HSFP - P6 - Choctaw vs. Oktaha Va
1:00	HSFP - P7 - Hammon vs. Chouteau	1:00	HSFP - P8 - Mount St. Mary vs. Wynnewood	1:00	HSFP - P9 - Chandler vs. Edmond Memorial
3:00	HSFP - P10 - Oktaha Varsity vs. Wynnewood	3:00	HSFP - P11 - Edmond Memorial vs. Bethany	3:00	HSFP - P12 - Deer Creek vs. Shattuc
5:00	HSFP - P13 - Chandler vs. Bethany	5:00	HSFP - P14 - Shattuck vs. Dale	5:00	HSFP - P18 - Carney vs. Porum
7:00	HSFP - P16 - Deer Creek vs. Dale	7:00	HSFP - P17 - Walters vs. Porum	7:00	HSFP - P11 - Oktaha Varsity vs. Lone Grove

SCHOOL ROSTER

ARNETT HIGH SCHOOL
 BETHANY HIGH SCHOOL
 CARNEY HIGH SCHOOL
 CHANDLER HIGH SCHOOL
 CHOCTAW HIGH SCHOOL
 CHOUTEAU HIGH SCHOOL
 DALE HIGH SCHOOL
 DEER CREEK HIGH SCHOOL
 EDMOND MEMORIAL HIGH SCHOOL

HAMMON HIGH SCHOOL
 LONE GROVE HIGH SCHOOL
 MOUNT ST. MARY HIGH SCHOOL
 OKTAHA HIGH SCHOOL JV
 OKTAKA HIGH SCHOOL VARSITY
 PORUM HIGH SCHOOL
 SHATTUCK HIGH SCHOOL
 WALTERS HIGH SCHOOL
 WYNNEWOOD HIGH SCHOOL

FRIDAY, AUGUST 23

DP 1 OGE STADIUM	DP 4 INTEGRIS FIELD	DP 3 FIELD 3	DP 2 FIELD 2
9:00 HSFP - P19 - Newcastle vs. Dewey	9:00 HSFP - P20 - Westmoore vs. Lone Grove	9:00	9:00
11:00 HSFP - P21 - Edmond Memorial vs. Piedmont	11:00 HSFP - P22 - Plainview vs. Dewey	11:00 HSFP - P23 - Prue vs. Arnett	11:00
1:00 HSFP - P24 - Midwest City vs. Mount St. Mary	1:00 HSFP - P25 - Edmond Memorial vs. Woodward	1:00 HSFP - P26 - Westmoore vs. Guthrie	1:00 HSFP - P27 - Piedmont vs. Newcastle
3:00 HSFP - P28 - Edmond North vs. Woodward	3:00 HSFP - P29 - Moore vs. Altus	3:00 HSFP - P30 - Shattuck vs. Choctaw	3:00 HSFP - P31 - Plainview vs. Bridge Creek
5:00 HSFP - P32 - Arnett vs. Porum	5:00 HSFP - P33 - Bethany vs. Shattuck	5:00 HSFP - P34 - Moore vs. Bridge Creek	5:00 HSFP - P35 - Lone Grove vs. Guthrie
7:00 HSFP - P36 - Edmond Santa Fe vs. Altus	7:00 HSFP - P37 - Choctaw vs. Bethany	7:00 HSFP - P38 - Prue vs. Porum	7:00

SCHOOL ROSTER

ALTUS HIGH SCHOOL
 ARNETT HIGH SCHOOL
 BETHANY HIGH SCHOOL
 BRIDGE CREEK HIGH SCHOOL
 CHOCTAW HIGH SCHOOL
 DEWEY HIGH SCHOOL
 EDMOND MEMORIAL HIGH SCHOOL
 EDMOND NORTH HIGH SCHOOL
 EDMOND SANTE FE HIGH SCHOOL
 GUTHRIE HIGH SCHOOL
 LONE GROVE HIGH SCHOOL

MIDWEST CITY HIGH SCHOOL
 MOORE HIGH SCHOOL
 MOUNT ST. MARY HIGH SCHOOL
 NEWCASTLE HIGH SCHOOL
 PIEDMONT HIGH SCHOOL
 PLAINVIEW HIGH SCHOOL
 PORUM HIGH SCHOOL
 PRUE HIGH SCHOOL
 SHATTUCK HIGH SCHOOL
 WESTMOORE HIGH SCHOOL
 WOODWARD HIGH SCHOOL

SATURDAY, AUGUST 24

DP 1 OGE STADIUM	DP 4 INTEGRIS FIELD	DP 3 FIELD 3	DP 2 FIELD 2
9:00 HSFP - P39 - Elgin vs. Locust Grove	9:00 HSFP - P40 - Bethany vs. Piedmont	9:00 HSFP - P41 - Preston vs. Prue	9:00 HSFP - P42 - Guthrie vs. Plainview
11:00 HSFP - P43 - Walters vs. Preston	11:00 HSFP - P44 - Edmond North vs. Plainview	11:00 HSFP - P45 - Piedmont vs. Southm	11:00 HSFP - P46 - Locust Grove vs. Newcastle
1:00 HSFP - P47 - Elk City vs. Stroud	1:00 HSFP - P48 - Elgin vs. Newcastle	1:00 HSFP - P49 - Edmond North vs. Gut	1:00 HSFP - P50 - Bethany vs. Southmoor
3:00 HSFP - P51 - Frederick vs. Wilson	3:00 HSFP - P52 - Walters vs. Prue	3:00 HSFP - P53 - Yukon vs. Bridge Creel	3:00 HSFP - P54 - Westmoore vs. Mount Mary
5:00 HSFP - P55 - Bridge Creek vs. OKC Broncos	5:00 HSFP - P56 - Elk City vs. Edmond Santa Fe	5:00 HSFP - P57 - Mount St. Mary vs. Mustang	5:00 HSFP - P58 - Frederick vs. Midwest City
7:00 HSFP - P59 - Mustang vs. Westmoor	7:00 HSFP - P60 - Midwest City vs. Wilsc	7:00 HSFP - P61 - OKC Broncos vs. Yukon	7:00 HSFP - P62 - Edmond Santa Fe vs. Stroud

SCHOOL ROSTER

BETHANY HIGH SCHOOL
 BRIDGE CREEK HIGH SCHOOL
 EDMOND NORTH HIGH SCHOOL
 EDMOND SANTA FE HIGH SCHOOL
 ELGIN HIGH SCHOOL
 ELK CITY HIGH SCHOOL
 FREDERICK HIGH SCHOOL
 GUTHRIE HIGH SCHOOL
 LOCUST GROVE HIGH SCHOOL
 MIDWEST CITY HIGH SCHOOL
 MOUNT ST. MARY
 MUSTANG HIGH SCHOOL

NEWCASTLE HIGH SCHOOL
 OKC BRONCOS
 PIEDMONT HIGH SCHOOL
 PLAINVIEW HIGH SCHOOL
 PRESTON HIGH SCHOOL
 PRUE HIGH SCHOOL
 SOUTHMOORE HIGH SCHOOL
 STROUD HIGH SCHOOL
 WALTERS HIGH SCHOOL
 WESTMOORE HIGH SCHOOL
 WILSON HIGH SCHOOL
 YUKON HIGH SCHOOL

GENERAL INFORMATION

ADMISSION TIMES

ATHLETES/COACHES CAN ENTER THE COMPLEX 1 HOUR AND 30 MINUTES PRIOR TO THE FIRST GAME OF THE DAY. GATES WILL OPEN FOR FANS 1 HOUR BEFORE THE FIRST GAME OF THE DAY.

ADMISSION COST

TICKETS CAN BE PURCHASED AT THE 1B TICKET BOOTH OFFICE.

COST: \$10 PER PERSON PER DAY (6 AND UNDER FREE)

BAG CHECKS/PROHIBITED ITEMS

THERE WILL BE PRECAUTIONARY BAG CHECKS (PLEASE SEE THE CLEAR BAG POLICY AND PROHIBITED ITEMS LIST AT THE END OF THIS PACKET). WE FOLLOW A CLEAR BAG POLICY UNLESS IT IS A 9X7 SIZE CROSS BODY OR SIMILAR SIZE BAG.

CLEATS

IN AN ATTEMPT TO KEEP FACILITIES AS SHARP AS POSSIBLE. IT IS MANDATORY THAT NO CLEATS ARE WORN ON THE CONCRETE AT ANY TIME. PLEASE ENCOURAGE YOUR ATHLETES TO TAKE OFF THEIR CLEATS BETWEEN GAMES.

CONCESSIONS / WATER BOTTLES

CONCESSIONS WILL BE OPEN AND RUNNING THE FULL MENU. ONE SEALED BOTTLE OF WATER PER PERSON WILL BE ALLOWED INTO THE PARK. WE ALSO HAVE WATER BOTTLE FILLING STATIONS ALONG THE CONCOURSE.

COOLERS

ONE TEAM COOLER WILL BE ALLOWED INTO DEVON PARK PER TEAM. THE COOLER STICKER WILL BE GIVEN TO THE HEAD COACH WHEN THEY CHECK IN FOR THE EVENT.

DUGOUTS

FIRST / TOP TEAM LISTED ON THE SCHEDULE WILL OCCUPY THE 1ST BASE DUGOUT. SECOND/ BOTTOM TEAM LISTED ON THE SCHEDULE WILL OCCUPY THE THIRD BASE DUGOUT, UNLESS TEAM IS PLAYING A DOUBLE HEADER.

ALL DUGOUTS WILL HAVE ICE WATER JUGS MAINTAINED THROUGHOUT THE EVENT. PLAYERS/TEAMS WILL HAVE TO SUPPLY THEIR OWN DRINKING CUP.

GAME BALLS

USA SOFTBALL WILL SUPPLY ALL GAME BALLS FOR THIS EVENT.

HOME/AWAY

TEAMS THAT ARE FIRST/TOP OF THE BRACKET WILL BE THE VISITOR. TEAMS THAT ARE LISTED SECOND/BOTTOM WILL BE THE HOME TEAM FOR THAT GAME.

LINE DRILLS

LINE DRILLS ARE PROHIBITED FROM TAKING PLACE ON THE INFIELD UNTIL THE FIELD CREW HAS COMPLETELY EXITED.

THERE WILL BE NO WARMUPS ALLOWED IN THE OUTFIELD AT ANY TIME ON ALL FIELDS UNLESS YOU ARE BEYOND THE TEMPORARY FENCE.

LINE-UPS

ALL LINE UP CARDS WILL BE PROVIDED BY USA SOFTBALL IN THE COACHES PACKET PROVIDED AT CHECK-IN. LINE UPS MUST BE TURNED INTO YOUR FIELDS OFFICIAL SCOREKEEPER AT YOUR DESIGNATED FIELD NO LESS THAN 30 MINUTES PRIOR TO GAME TIME.

LIVE STREAM

ALL GAMES WILL BE AVAILABLE THROUGH LIVE STREAM FOR USERS TO WATCH ON THE EVENT PAGE UNDER THE DEVON PARK SECTION THROUGH USASOFTBALL.COM.

MEDICAL

A CERTIFIED ATHLETIC TRAINER WILL BE ON SITE AT ALL TIMES LOCATED IN THE LAST ROOM ON THE CONCOURSE NEAR THE BACK FIELDS.

MERCHANDISE

WE WILL HAVE A TOURNAMENT SHIRT FOR SELL AT THE FRONT GATE. ALL SHIRTS WILL BE \$25 ON SITE. WE ACCEPT DEBIT/CREDIT CARDS AND CASH FOR ALL PURCHASES. LIMITED AVAILABILITY OR UNTIL SOLD OUT.

PARKING

THERE WILL BE A SPECTATOR PARKING FEE PER VEHICLE THAT ENTERS INTO THE LOT FOR THIS EVENT. YOU CAN PARK AT REMINGTON AND WALK THE TRAIL OVER FOR FREE IF YOU CHOOSE.

SCHOOL BUSES/VANS WILL BE ABLE TO ENTER IN FOR FREE. SCHOOL BUSES/VANS CAN PARK ANYWHERE IN THE MAIN PARKING LOT.

SECURITY

WE WILL HAVE OKCPD PRESENCE ON SITE AT ALL TIMES WHEN SPECTATORS AND TEAMS ARE INSIDE THE COMPLEX.

UMPIRES

ALL UNMPIRES ARE OSSAA CERTIFIED UMPIRES.

DEVON PARK CLEAR BAG POLICY

Devon Park (2801 NE 50th Street Oklahoma City, OK 73111) operates with a clear bag policy for all events.

The Clear Bag Policy aims to provide a safer environment for the public while allowing quicker entry into the complex. The less bags to search and the ability to easily see through the clear bag will expedite entry for all who attend.

We strongly encourage you to leave all your bags at home and travel light. **If you do travel with a bag, below are the permissible bags allowed into the complex:**

- Non-clear bags of 9" (L) x 7" (W) or smaller. This could include clutches, cross bodies, or fanny packs.
- Diaper bags, Medical bags, Camera bags and/or Binocular cases DO NOT have to be clear but are subject to a full inspection and will have to be classified by the gate worker as an approved bag. If the bag is approved, a tag will be provided and must be present on the bag at all times.

Prohibited bags include but are not limited to:

- Any size purse or clutch that is larger than 9" (L) X 7" (W) or that is not clear
- Briefcases, backpacks, cinch bags, and fanny packs that are not clear and/or exceed the size restriction
- Coolers (unless used as team cooler inside of dugout)
- Luggage of any kind
- Computer bags/cases

This policy pertains to bags and is not an all-inclusive list of items that are prohibited from being taken into Devon Park.

Every bag that is allowed inside Devon Park will be checked by the gate staff. There are no provisions to check items at the entry gates. Fans will be asked to either take prohibited items back to their cars before entry or dispose of prohibited items at the entrance. Fans may continue to carry approved items without a bag (e.g., binoculars, cameras and smart phones) into the complex.

For questions regarding stadium policies, please contact DevonPark@USASoftball.com



DEVON PARK PROHIBITED ITEMS

- Alcohol, drugs, illegal substances, or any paraphernalia associated with drug use, INCLUDING vapes and all tobacco products
- Cans
- Outside food
- Animals that are not deemed to be service animals. Emotional support animals are NOT allowed.
- Bags exceeding the size of a backpack Tripod Cameras; All cameras MUST be handheld
- Drones
- Tents
- Fireworks or noisemakers that produce explosive cleanups
- Balloons, confetti, glitter
- Blow microphones or alarming noisemakers such as air horns
- Any object with stick or poles (Flag, signs, selfie stick, umbrellas, etc.)
- Laser pens/pointers of any type
- Pepper spray/Mace
- Obscene or indecent clothing
- Use of 4wheel footwear, scooters, bicycles, skateboard, hoverboard, segway
- Weapons of any type, including chains, knives, firearms and spiked jewelry. (Off duty officers may bring in firearm but will be given proper awareness)
- Wrapped gifts
- Frisbees, toys, footballs, or other "games" that are deemed unacceptable by USA Softball Event/Devon Park management
- Any other item deemed unacceptable by USA Softball Event/Devon Park management



Devon Park will allow ONE sealed water bottle of 24oz or less per person
One sports cup (Yeti, Stanley, Corkcicle, etc.) per person will be allowed, but must be emptied before entering the complex.

For questions regarding stadium policies, please contact DevonPark@USASoftball.com



DEVON PARK PROHIBITED ITEMS

ALLOWED



9x7 or smaller
non clear bag



Clear Bag



Clear Ziplock



One sealed 24oz or smaller
bottle of water



Diaper Bag



Medical Bag

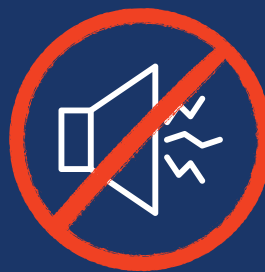
NOT ALLOWED



Cooler
Excludes team cooler



Weapons



Noise Makers



Umbrellas



Footballs or
other toys



Backpacks



Outside Food
and Drinks



Pets
Excludes service animal

Other items may be deemed prohibited by USA Softball or Devon Park Management



LODGING



USE CODE "USA SOFTBALL" FOR DISCOUNTS!

AVID OKC AIRPORT

4621 SW 15TH ST OKC, OK 73128
ASHLEY.FIELDS@CHAMPION-HOTELS.COM
(405) 519-9677

HILTON GARDEN INN - OKC MIDTOWN

2809 NW EXPRESSWAY OKC, OK 73112
VALORIE@LEGACYOK.COM
(405) 607-4000

SHERATON - OKC DOWNTOWN

1 N BROADWAY AVE OKC, OK 73102
DCISNEROS@SHERATONOKC.COM
(405) 235-2780

FAIRFIELD INN - OKC NW

4521 SW 15TH ST OKC, OK 73128
JENNIFER.SULEIMAN@CHAMPION-HOTELS.COM
(405) 604-3223

TOWNEPLACE SUITES

4601 SW 15TH ST OKC, OK 73128
JENNIFER.SULEIMAN@CHAMPION-HOTELS.COM
(405) 607-4000

RENAISSANCE - OKC DOWNTOWN

100 E SHERIDAN AVE OKC, OK 73104
ZOEI.HOLLOWAY@MARRIOTT.COM
(405) 768-5300

DOUBLE TREE BY HILTON - AIRPORT

4410 SW 19TH ST OKC, OK 73108
DOUBLETREEOKC_DOS@HP-HOTELS.COM
(405) 688-3300

HOLIDAY INN

4401 SW 15TH ST OKC, OK 73108
ASHLEY.FIELDS@CHAMPION-HOTELS.COM
(405) 601-7272

COUNTRY INN & SUITES QUAL SPRINGS

13501 MEMORIAL PARK DRIVE OKC, OK 73120
ROSEMARY.MORGAN@COUNTRYINNAMERICAS.COM
(405) 286-3555

HILTON GARDEN INN - NORTH QUAIL SPRINGS

3201 NW 137TH ST OKC, OK 73134
CHARLES.OMONDI@HILTON.COM
(405) 752-5200

HAMPTON INN - OKC NW

3022 NW EXPRESSWAY OKC, OK 73112
PAUL.CRONE@HILTON.COM
(405) 947-0953

RESIDENCE INN NW

3151 NW EXPRESSWAY OKC, OK 73112
JOLIE.JACKSON@CHAMPION-HOTELS.COM
(405) 605-6666

EMBASSY SUITES - OU MEDICAL

741 N PHILLIPS AVE OKC, OK 73104
TASHA.HOUCK@HILTON.COM
(405) 239-3900

COURTYARD BY MARRIOTT - AIRPORT

4301 HIGHLINE BLVD OKC, OK 73108
MELISSA.NELSON@MARRIOTT.COM
(405) 946-6500

SPRINGHILL SUITES

600 E SHERIDAN AVE OKC, OK 73104
JENNIFER.SULEIMAN@CHAMPION-HOTELS.COM
(405) 601-6206

RENAISSANCE - OKC WATERFORD

6300 WATERFORD BLVD OKC, OK 73118
JLECKIE@WATERFORDOKC.COM
(405) 848-4782

FAIRFIELD INN - NW WARR ACRES

5700 NW EXPRESSWAY OKC, OK 73132
JOLIE.JACKSON@CHAMPION-HOTELS.COM
(405) 470-8484

TRU OKC AIRPORT

802 S MERIDIAN AVE OKC, OK 73108
ASHLEY.FIELDS@CHAMPION-HOTELS.COM
(405) 609-3955